



# Global Environmental and Textile Technological Services.

*A Greener Solution for the Next World*

**COMPANY PROFILE**

**GETTS-BD.COM**

# PREAMBLE OF THE COMPANY

Global Environmental and Textile Technological Services (GETTS) is an independent consultancy firm, offering quality services in the environmental sciences and engineering. Services are provided in the disciplines of environmental consulting, reporting, designing & executing, management, audit, water and wastewater treatment, chemical supply, and environmental test. Its service is accurate and timely delivered at a reasonable charge.

GETTS was established in 2011. Since establishment, for public and private sector clients, we implement multidisciplinary projects that require 'Environmental Clearance from the Government. We have prepared different types of environmental and social assessment in the field of textile, leather and footwear, plastic, electrical and electronic engineering, light engineering, agro-based industries, cement industries, shipbuilding and dockyard, Hospitals, etc. We consult in the related field all over the country.

We assess environmental & social impacts (ESIA), initial environmental examination (IEE), prepare of environmental management/monitoring plan (EMP), for the different development projects and industries. According to the National 3R strategy, we draw up and implement zero liquid discharge (ZLD) plan. We design and fabricate water treatment plant (WTP), effluent treatment plant (ETP), wastewater treatment plant (WWTP), sewage treatment plant (STP) for all kinds of facilities. We also provide environmental laboratory services and chemicals for wastewater treatment.

We have experience more than 450 projects in different fields of the environment and social quality compliance. GETTS is proud of its growth and ongoing professional development of its staff. Recognizing the value of customer satisfaction, our goal is to provide good quality of service on time.

## OUR VISION

“Assists to create a developed country with a better Environment”

GETTS desires that all industries and development activities in Bangladesh will be environmentally friendly, and we will achieve the topmost position in the field of environmental consultancy through our continuous quality service provision.

## OUR MISSION

“We contribute to achieve the vision in sustainable development and Environment-friendly consultation wherever we work”

GETTS is committed to providing appropriate solutions in supporting the various business/project undertakings of clients in conformance with the requirements of government agencies and private sectors. We integrate our knowledge and technologies to conserve, restore, and create sound Environments.

## OUR VALUES



We develop an efficient solution that creates value for our customer while raising the bar on industry standards for service and delivery.

Deliver superior results because we care deeply about what we do

GETTS and its staff priorities ethical behavior and do not tolerate bribery or corruption. Our safety culture targets zero harm to all.

Our team always strives to provide client-focused, high-quality services

We are conscientious of the impact that our work has on the environment. We provide clean, efficient, public-focused and sustainability

For each other and the client, do what it takes to get the job done

Teamwork to achieve our target and ensure service quality

# OUR SERVICES

- Preparation of Initial Environmental Examination (IEE)
- Preparation of Environmental Impact Assessment (EIA)
- Preparation of Social Impact Assessment (SIA)
- Preparation of Environmental Management/Monitoring Plan (EMP)
- Total Environmental & Social quality compliance (ISO 14001, ISO 9001, ISO QMS 45001, BSCI, SEDEX, WRAP, OCS, RCS, GRS etc.)
- Zero Liquid Discharge (ZLD) & 3R plan
- Preparation of Environmental Clearance Certificate Papers
- Consultancy, planning, Designing & Erection-installation of total factory
- Laboratory Services for Water, Wastewater and Air Quality Measurement
- Effluent treatment plant (ETP)
- Water treatment plant (WTP)
- Wastewater Treatment Plant (WWTP)
- Different kinds of Pump, Blower, Diffuser, and Vessel etc.
- Deep tube-well installation
- All kinds of ETP Chemicals

# Key Features

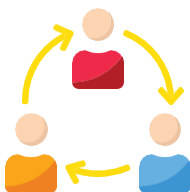
The GETTS is a consulting firm for greener, sustainable and proper operations of the factory. The key features of GETTS are as follows



**Quick and Appropriate:** Ensure quick and appropriate environmental and social assessment, Environmental Certification, and Environmental design with Commissioning of any development projects or industries.



**Ensure the Quality:** Quality ensure of the service and product we provide.



**Team Work:** We have strong team combination and team work. As a result, it is possible to deliver products faster while maintaining all standards.



**Project Completion:** More than 450 projects have been completed in different fields of the Environment.



**Experience:** The company is experienced near 10 years. GETTS provides its consultancy since 2011.

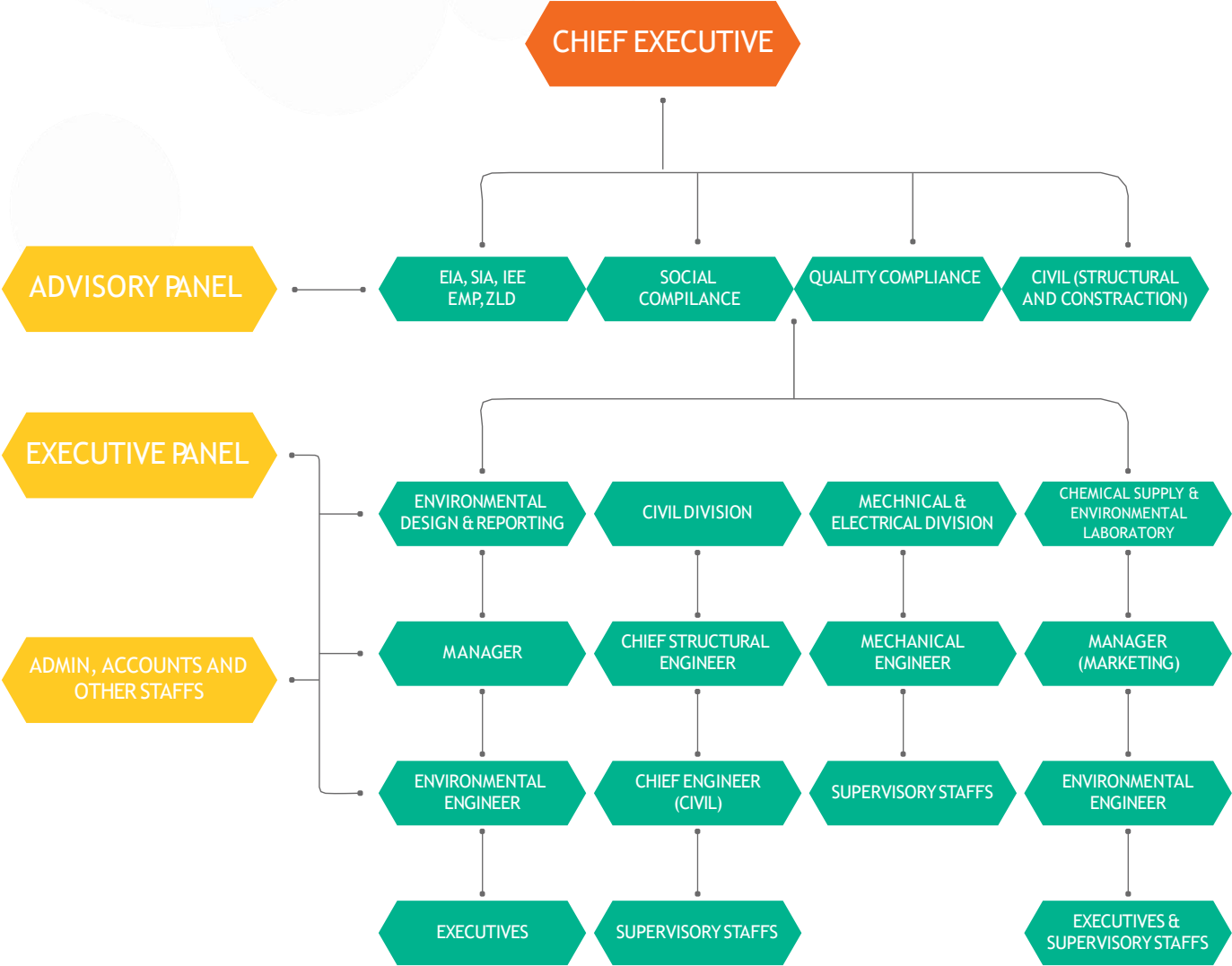


**Environmental Laboratory Facilities:** Environmental laboratory service for water, wastewater, and air examination.



**Cost Efficiency Service:** We ensure cost effective service. Therefore, you can save your money more than the other firms.

# Organogram



# List of our Personnel

**Engr. Md. Golam Kibria**

Chief Executive

B.Sc.Tech (Textile), Life Fellow-IEB  
Bangladesh University of Textile (BUTEX)

## ADVISORY PANEL

**Md. Shahjahan Engr.**

**Md. Shamsul Alam Engr.**

**Md. Abdul Hakim**

**Prof. Mostafizur Rahman**

**Md. Golam Mawla (TUHIN)  
Manager (ADMIN)  
Masters of Social Science  
PGD in Marketing Management**

# Environmental Design and Reporting Division

This division is responsible for environmental design and reporting. This division consists of three advisors and well-qualified executives. This section assess environmental and social impacts and then prepares different types of reports about Environmental Impact Assessment (EIA), Initial Environmental Examination (IEE), Environmental Management and/or Monitoring Plan (EMP), Zero Liquid Discharge (ZLD) plan and others. Each and every report is prepared based on the field visit data collection, oral communication, public consultation, and literature review. This advisor and executives of the division are as follows.

## Advisor (s)

### **Md. Shahjahan**

Add. Director General (Retried)  
Department of Environment  
Bangladesh

### **Engr. Tandra Haque**

B,Sc. EEE , MBA  
East West University

### **Md. Malikuzzaman (Jhontu)**

MSS in Economic  
University of Rajshahi

## Executives

### **Shumya Jannat**

B. Sc. & M. Sc. in Environmental Sciences  
Jahangirnagar University

### **Arifa Khatun**

Diploma & B. Sc. at Environmental Sciences  
University of South Asia

## Environmental Laboratory and Chemical Division

This division is responsible for Chemical supply and Environmental laboratory service. This division consists of well-qualified executives and lab experts. This division provides the different kinds of test facilities of surface and ground water, wastewater (effluent & sewage) and measure of different parameters of air, sound and light. As well as the division provides some physical parameters examination for home and industry like temperature, humidity, odor, etc.

The company has a well-equipped environmental laboratory. Quality chemicals for ETP, STP and WWTP provides by this division.

### EXECUTIVES

**Md. Tauhidul Islam**

Manager (Marketing, Chemical Division)

**Md. Shaik Hassan Ashik**

Environmental Chemist

B.Sc. & M. Sc. In Chemistry

Jagannath University

**Kazi Enamul Haque**

M. A. (IH)

Sadat University College, Tangail.

# Civil Division

This division is responsible for civil design and construction. This division consists of two advisors and a number of executives. This division provides the hydraulic and structural design with consultation, construction consultation and monitoring related to the water and wastewater treatment facilities. As well as the division provides design and drawing of different water and wastewater treatment plants (WWTP), Effluent Treatment Plants (ETP) and Sewage Treatment Plants (STP).

## ADVISORS

### **Engr. Md. Shamsul Alam**

Advisor (Structural)

B.Sc Engr. Civil ( BUET ), MBA (IBA), P.E. ( Malaysia)

### **Engr. Md. Abdul Hakim**

Advisor (Construction)

Ex- Executive Engr. Grameen Bank  
B.Sc Engineer ( Civil ) , KUET

## EXECUTIVES

### **Md. Mijanur Rahman**

Civil Engineer

Diploma in Engineering (CIVIL)

### **Md. Abdur Rahim**

Civil Engineer

Bsc in Engineering (CIVIL)

### **Engr. Nasim Khan**

B. Sc. in Civil Engineering

Khulna University of Engineering and Technology

# Mechanical and Electrical Division

This division is responsible for Mechanical and Electrical works related to environmental services. This division consists of well-qualified executives. This division provides the mechanical and electrical erection and commissioning with consultation, machineries selection and monitoring related to the water and wastewater treatment facilities. As well as the division provides design and drawing of different Pipe & Instrumental Drawing (PID), Machine layout plan, etc. related to water and wastewater treatment plants (WWTP), Effluent Treatment Plants (ETP), Sewage Treatment Plants (STP) and Deep Tube well setup.

## EXECUTIVES

### **Sk. Abdul Latif (Pintu)**

Mechanical Engineer  
Diploma in Engineering (Mechanical)  
Khulna Polytechnic Institute

### **Md. Shawon Hassan**

Service Engineer (Electrical)  
B.Sc. in Engineering  
(Electrical)

### **Md. Abdur Rahim**

Mechanical Engineer  
Diploma in Engineering (Mechanical)  
Barishal Polytechnic Institute

### **Md. Jamal Uddi**

Technician (Electrical)

### **Md. Zahidul Islam**

Mechanical Fitter

### **Azizul Rahim**

Mechanical Welder

# Our Valuable Clients



# Brief History of the Organization

The organization has been started its journey in January 2011. The Chief Executive and its two personnel were at the starting of the company. In the first phase, the company has been started with a single function of service that was Environmental Clearance Certificate obtaining. After only its two months later the company has got the consultancy of effluent treatment plant design and execution from the ATM Lungi factory. Since the time the company has been provided consultancy for the design and execution of the Effluent Treatment Plant (ETP) more than 110 industries.

From the mid of 2010, the company has been started report on environmental Impact Assessment, Social Impact Assessment, Environmental Management and Monitoring Plan (EMP). In the last of 2011, the company has got the environmental consultancy service of Star Ceramics. All environmental consultancy like environmental impact assessment and its technical support of the Star Ceramic provided by the organization. This project was the turning point of the company. Since the company has been prepared environmental and social impact assessment report for more than 260 projects successfully.

The company has been started to prepare Zero Liquid Discharge for the industry and other facilities. Up to this the company effectively prepared the report and execution zero liquid discharge plan for more than 150 project successfully.

The company started import of different environmental equipment and machineries from 2012. Another two wings of the company are the installation of deep tube well and chemical supply for wastewater treatment facilities has been added from 2013. The company opened internship facilities for fresher of bachelor & diploma in engineering students, in the field of social compliance and environmental engineering.

Gradually, the company has been grown up and recruits with increasing its number of advisers and staffs. Now the company has three advisers in the environmental, social and compliance field and two advisers in the civil engineering field. Now the company is operating with five advisers and 27 fulltime employees with numbers of part timers in different fields of science, engineering, arts, and commerce background. As well as the company provided its glorious consultancy for more than 450 companies or industries.

## Background of the Chief Executive

Engr. Md. Golam Kibria was born in May-01, 1957 at Khejurtala, Barguna. He graduated in 1983 from college of Textile Technology ( Presently BUTEX )Tejgaon I/A, Under Dhaka University.

Engr. Md. Golam Kibria started his career as Production officer in Janata Jute Mills Ltd. at Ghorashal, Narshingdi, and then finally took his "Golden hand shake" immature retirement from Adamjee Jute Mills Ltd. (BJMC) in June – 2002 as Deputy Manager (Production). After retirement from the BJMC he started private sector services in Tex Trade Corporation as Technical manager, Gloria corporation Pvt Ltd. as Director (Marketing) and Aquatech Engineering Services Ltd. as Executive Director successfully. He started his own business firm in November - 2010. Now he is working as Chief Executive of the company

Engr: Md. Golam Kibria has participated in many training program on Environment in Department of Environment. He is a life member of (i) Institute of Textile Engineers and Technologist (ITET ) (ii) Institute of Engineers, Bangladesh (IEB). He involved in many social and welfare organizations.

## List of Reference of Effluent Treatment Plant (E.T.P)

SL	Name of Companies	Type of plan	Capacity
01.	Alauddin Textile Mills ( Running )	Woven dyeing Printing	40 m <sup>3</sup> /hr
02.	Star Ceramic Pvt. Ltd. (Running)	Ceramics Plant	35 m <sup>3</sup> /hr
03.	Mid Asia Fashion Ltd. ( Running )	Washing Plant	15 m <sup>3</sup> /hr
04.	V- Knitwear Composite Ltd.( Running)	Knit Composite	35 m <sup>3</sup> /hr
05.	M/S. Purnima Dyeing & Printing (Running)	Dyeing & Printing	15 m <sup>3</sup> /hr
06.	Ideal Textile Mills Ltd. ( Running )	Woven dyeing Printing	50 m <sup>3</sup> /hr
07.	Windy Wet & Dry Process Ltd. ( Running )	Washing Plant	20 m <sup>3</sup> /hr
08.	York Composite Ltd. ( Running )	Knit Composite	40 m <sup>3</sup> /hr
09.	Surichala Textile & Dyeing Mills Ltd. ( Running )	Woven Dyeing	20 m <sup>3</sup> /hr
10.	Gungeetal Thread. ( Running )	Yarn Dyeing	02 m <sup>3</sup> /hr
11.	Novartis Bangladesh Limited ( Running )	Pharmaceutical	12 m <sup>3</sup> /hr
12.	Mahmud Denims Limited ( Running )	Jeans Fabrics	40 m <sup>3</sup> /hr
13.	Bhai Bhai Printing and Finishing (Running)	Woven dyeing & printing	15 m <sup>3</sup> /hr
14.	Al-Aksha Printing and Finishing (Under construction)	Woven dyeing & printing	15 m <sup>3</sup> /hr
15.	Unique dyes and chemicals ( Running )	Chemical Plant	1 m <sup>3</sup> /hr
16.	M/S khan Enterprise (Running)	Lungi Washing	10 m <sup>3</sup> /hr
17.	FGS Laundry Ltd. (Running)	Washing Plant	10 m <sup>3</sup> /hr
18.	Polymer Knit Wear (Running)	Knit Composite	50 m <sup>3</sup> /hr
19.	Bashar Paper Mills Ltd. ( Running )	Paper Mill	30 m <sup>3</sup> /hr
20.	Purbachal Paper Mills Ltd. (Under construction)	Paper Mill	135 m <sup>3</sup> /hr
21.	JRK Color and Chemicals ( Running )	Chemical plant	1 m <sup>3</sup> /hr
22.	Fishing Hook Manufacturing co. ltd. ( Running )	Fishing Hook Washing	0.5 m <sup>3</sup> /hr
23.	Tokyo Packaging Limited ( Running )	Drum & Button Washing.	0.5 m <sup>3</sup> /hr
24.	Madhumati Chemicals Ltd. (Running)	Chemical Production	1 m <sup>3</sup> /hr
25.	Binoda Knitwear Ltd. (Running)	Printing & Drum Wash	5 m <sup>3</sup> /hr
26.	Ashik Dress & Design Ltd. ( Running )	Printing plant	0.5 m <sup>3</sup> /hr
27.	Turag Wash. ( Running )	Washing Plant	4 m <sup>3</sup> /hr

## List of Reference of Effluent Treatment Plant (E.T.P)

SL	Name of Companies	Type of plan	Capacity
28.	Fariha Knit Tex Ltd. ( Running )	Knit Composite Plant	250 m <sup>3</sup> /hr
29.	Sharmin Dyeing and printing Industries (Running)	Woven dyeing & printing	20 m <sup>3</sup> /hr
30	A.R Wet Processing Ltd. (Running)	Washing Plant	15 m <sup>3</sup> /hr
31.	Polo Composite Knit Industry Ltd. (Running)	Knit Dyeing & Washing	180 m <sup>3</sup> /hr
32.	Janata Jute Mills Limited. (Running)	Jute Fiber Dyeing	20 m <sup>3</sup> /hr
33.	Indigo Washing Ltd. ( Running )	Washing Plant	20 m <sup>3</sup> /hr
34.	A.K Washing Ltd. ( Running )	Washing Plant	25 m <sup>3</sup> /hr
35.	K.M Color and Fabrics. (Running)	Yarn Dyeing	7 m <sup>3</sup> /hr
36.	R.F.S Washing . (Running)	Washing Plant	20 m <sup>3</sup> /hr
37.	Blue Jeans Washing Plant. (Running)	Washing Plant	10 m <sup>3</sup> /hr
38.	Star Porcelain (Pvt.) Ltd. ( Running )	Ceramics Plant	10 m <sup>3</sup> /hr
39.	Crony Sweater Ltd. (Running)	Sweater Washing	6 m <sup>3</sup> /hr
40.	Mahin Cycle Industries Ltd. (Running)	Cycle Factory	2 m <sup>3</sup> /hr
41.	Better life hospital Ltd. ( Running)	Hospital	500 lit/hr
42	Creation pvt Ltd ( Running)	Jute Dyeing	1.5 m <sup>3</sup> /hr
43	Exim Bank Hospital ( Running)	Hospital	200 lit/hr
44	Green Touch Fashion (Running	Washing Plant	20 m <sup>3</sup> /hr
45.	Knit Plus Limited (Under construction)	Knit Composite Plant	100 m <sup>3</sup> /hr
46.	Max Sweater (BD) Ltd. (Running)	Sweater wash	3 m <sup>3</sup> /hr
47.	Nilorn Bangladesh Ltd. ( Running)	Drum & Bucket wash	250lit/hr
48.	North Hair Products Ltd. ( Running)	Hair Factory	500lit/hr
49.	Oasis Laboratories Ltd. ( Running)	Pharmaceutical	500lit/hr
50	People Ceramics Ltd. ( Running)	Ceramics Factory	1 m <sup>3</sup> /hr
51.	Rahman Knit Garments Ltd. (Under construction)	Knit Composite Plant	80 m <sup>3</sup> /hr
52.	Reneta Ltd. ( Running)	Pharmaceutical	15 m <sup>3</sup> /hr
53.	Rezaul Haque Welfare Trust. ( Running)	Hospital	500 lit/hr

## List of Reference of Effluent Treatment Plant (E.T.P)

SL	Name of Companies	Type of plan	Capacity
54.	The Barakah General Hospital Ltd. ( Running)	Hospital	500lit/hr
55.	Vivid Wire Drawing Ltd. ( Running)	Stapler Pin Wash	250lit/hr
56.	W-One Co. ( Running)	Yarn dyeing	2 m <sup>3</sup> /hr
57.	Yeasmin Daluar Diagnostic Center & Hospital Ltd. ( Running)	Hospital	150lit/hr
58.	Modern Yarn Dyeing. . ( Running)	Yarn dyeing	3 m <sup>3</sup> /hr
59.	Mahmuda Textile & Processing Mills Ltd. (Running)	Woven dye: & print:	50 m <sup>3</sup> /hr
60	Modern Herbal Group . ( Running)	Herbal	500 lit/hr
61.	Mohera Paper Mills Limited. (Running)	Paper Mills	40 m <sup>3</sup> /hr
62.	R.L Tex Limited. (Under construction)	Dyeing	50 m <sup>3</sup> /hr
63.	M/S Ratul Textile. (Running)	Woven dye: & print:	40 m <sup>3</sup> /hr
64.	Trauma Center. (Running)	Hospital	250 lit/hr
65.	Dhaka Imperial Hospital. (Running)	Hospital	500 lit/hr
66.	Marks Medical College & Hospital. . (Running)	Hospital	500 lit/hr
67.	Galaxy Hospital (Pvt) Ltd. (Running)	Hospital	50 lit/hr
68.	Geli Industrial Ltd. . (Running)	Battery Factory	500lit/hr
69.	Xin Yuan Industrial Co. Ltd. . (Running)	Battery Factory	500lit/hr
70.	Bright Renewable Ltd. . (Running)	Battery Factory	2000lit/hr
71.	Vicar Electricals Limited. . (Running)	Transformer factory	2000lit/hr
72.	Legend Battery Limited. . (Running)	Battery Factory	250lit/hr
73.	Park View Heath Care Private Ltd. . (Running)	Hospital	1000 lit/hr
74.	Wangs Textile Ltd. (Under construction)	Yarn dyeing	25 m <sup>3</sup> /hr
75.	Islami Bank Hospital. (Running) Mirpur.	Hospital	100 lit/hr
76	Islami Bank Central Hospital. (Running) Kakrail.	Hospital	500 lit/hr
77	Sajida Hospital. (Running) Keranigonj.	Hospital	150 lit/hr

## List of Reference of Effluent Treatment Plant (E.T.P)

SL	Name of Companies	Type of plan	Capacity
78	Sajida Hospital. (Under construction) Shiddhirgong.	Hospital	200 lit/hr
79	Catharsis Medical Centre Ltd. (Running)	Hospital	300 lit/hr
80.	Molla Color Dyeing & Processing House. (Under construction)	Yarn dyeing	3 m <sup>3</sup> /hr
81.	Ecochem Bangladesh(pvt) Ltd. (Running)	Chemical Factory	0.5 m <sup>3</sup> /hr
82.	Uzzal Fabrics Ltd. (Running)	Woven dyeing	5 m <sup>3</sup> /hr
83	Samsu Dyeing (Running)	Woven dyeing	10 m <sup>3</sup> /hr
84	Pubali Industries Limited (Running)	Woven dyeing	20 m <sup>3</sup> /hr
85	Shugandha Textile Printing & Processing Limited (Running)	Woven dyeing	10 m <sup>3</sup> /hr
86.	Islami Bank Hospital. (Running) Mugda.	Hospital	500 lit/hr
87.	Islami Bank Hospital. (Running) Barisal.	Hospital	500 lit/hr
88.	Islami Bank Specialised & General Hospital. (Running) Nayapaltan.	Hospital	500 lit/hr
89	Asa Moni Printing.( Running)	Woven dyeing	10 m <sup>3</sup> /hr
90	Sonargaon Fancy Printing & Dyeing Ltd. (Running)	Woven dyeing	5 m <sup>3</sup> /hr
91	M.J Dyeing & Printing Ltd. (Running)	Woven dyeing	5 m <sup>3</sup> /hr
92	Khadiza Textile Processing & Printing Industries Limited. (Under construction)	Woven dyeing	40 m <sup>3</sup> /hr
93	M/S Kadamtali Dyeing & Printing. (Running)	Woven dyeing	15 m <sup>3</sup> /hr
94	AMZ Hospital Limited. (Running)	Hospital	300 lit/hr
95	Meghna Bangladesh Ltd. (Running)	Cycle Factory	3 m <sup>3</sup> /hr
96.	Shinest Button. (Running)	Button Factory	2 m <sup>3</sup> /hr
97.	Advance Pharmaceuticals. (Running)	Pharmaceutical	2 m <sup>3</sup> /hr
98.	Bhuiya dyeing Ltd. (Under construction)	Woven dyeing	1 m <sup>3</sup> /hr
99.	Islami Bank Hospital. Khulna.(Running)	Hospital	500 lit/hr

## List of Reference of Effluent Treatment Plant (E.T.P)

SL	Name of Companies	Type of plan	Capacity
100.	Islami Bank Hospital. Rajshahi.( Under construction )	Hospital	500 lit/hr
101.	Islami Bank Hospital. Chottogram. ( Running )	Hospital	500 lit/hr
102.	Delta Health Care (Running)	Hospital	300 lit/hr
103.	Anwar Khan Modern Hospital. ( Running )	Hospital	1 m <sup>3</sup> /hr
104.	M.A. Rashed Hospital. ( Running )	Hospital	1.5 m <sup>3</sup> /hr
105.	Japan Style Processing Ltd. (Running)	Meat Processing	500 lit/hr
106.	Bango C Food Ltd. (Running)	Food Processing	1.5 m <sup>3</sup> /hr
107.	Ahmed Foods Ltd. (Running)	Food Processing	0.5 m <sup>3</sup> /hr
108.	Heychem Bangladesh. (Running)	Agrovate Repacking	500lit/hr
109.	Intefa (Running)	Agrovate Repacking	300lit/hr
110.	Sark Bangladesh Ltd. (Running)	Agrovate Repacking	150 lit/hr
111.	Sealim Trading Co. Ltd. (Running)	Hair Processing	1 m <sup>3</sup> /hr
112.	Global Capsul Limited. ( Under construction )	Capsul Cover Manu:	50 m <sup>3</sup> /hr
113.	Meridien Washing Plant Ltd. ( Under construction )	Washing Plant	250 m <sup>3</sup> /hr
114.	Dhaka Ice Cream Ltd. ( Under construction )	Ice Cream Factory	07 m <sup>3</sup> /hr
115.	Fashionit Company Limited. ( Under construction )	Washing Plant	25 m <sup>3</sup> /hr
116.	Tairunnessa Memorial Medical College & Hospital. ( Under construction )	Hospital	3 m <sup>3</sup> /hr
117.	Doctors Community Hospital ( Pvt) Limited. ( Under construction )	Hospital	5 m <sup>3</sup> /hr



Scan Here



**Global Environmental  
and Textile Technological  
Services**

-  Darul Yussuf Apartment, Flat # 7 (B), House # 102/1,  
West Agargaon, Sher-E-Bangla Nagar , Dhaka-1207.
-  +88 02 9104226, +880 1552 360 199, +880 1711231512
-  [info@getts-bd.com](mailto:info@getts-bd.com), [enr.kibria\\_2010@yahoo.com](mailto:enr.kibria_2010@yahoo.com)
-  [www.getts-bd.com](http://www.getts-bd.com)